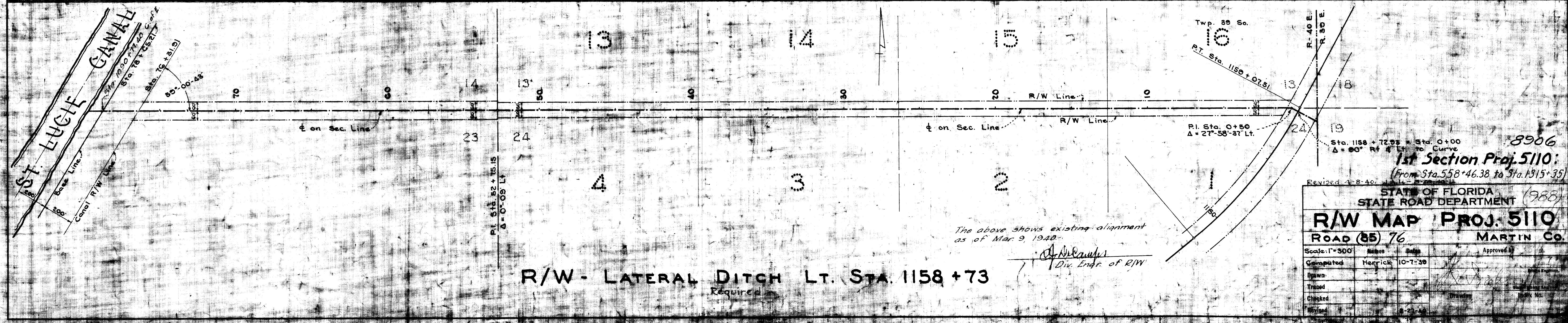
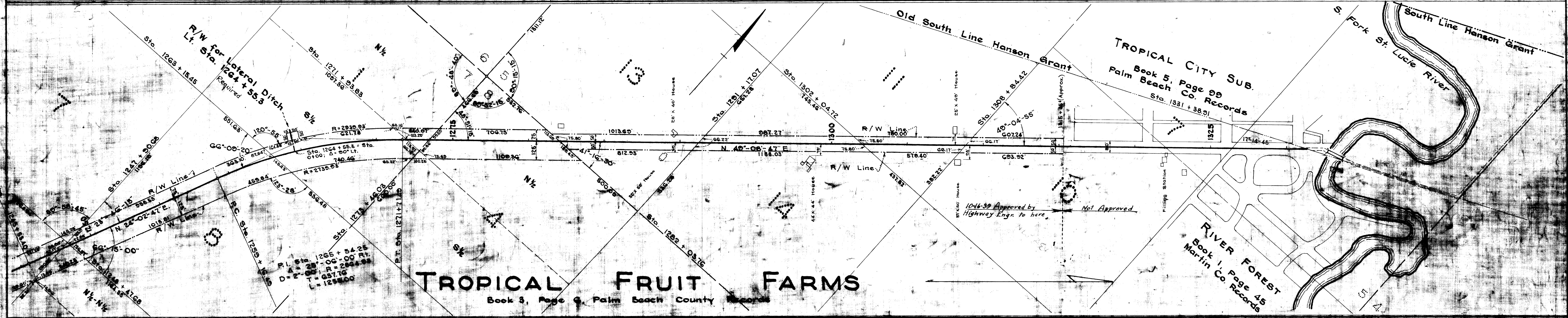
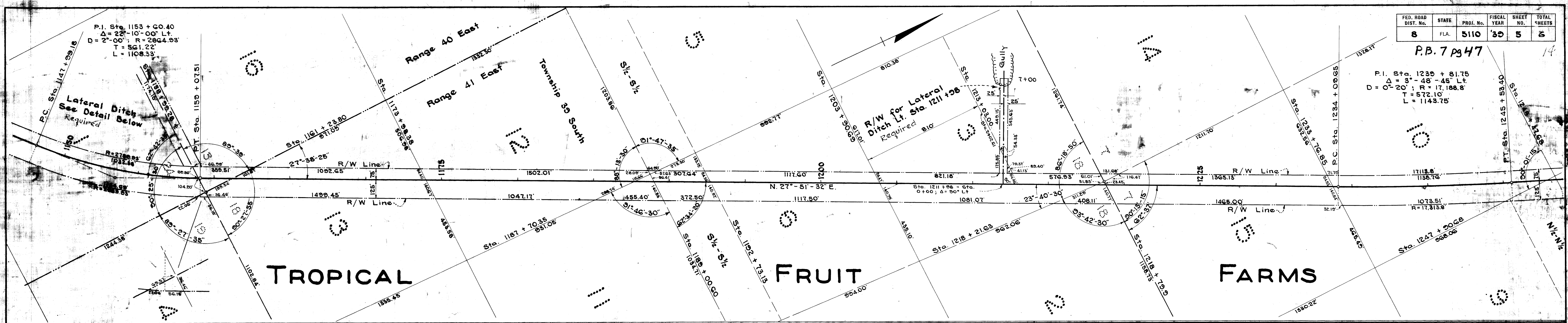


FED. ROAD DIST. No.	STATE	PROJ. No.	FISCAL YEAR	SHEET NO.	TOTAL SHEETS
8	FLA.	5110	'30	5	8

P.B. 7 pg 47

P.I. Sta. 1235 + 81.75
 $\Delta = 37^{\circ} 43' 45''$ Lt.
 $D = 0^{\circ} 20'$; R = 17,188.8'
 T = 572.10'
 L = 1148.75'



8906
 1st Section Proj. 5110:
 (From Sta. 558+46.38 to Sta. 1315+35)

STATE OF FLORIDA STATE ROAD DEPARTMENT				
R/W MAP PROJ. 5110		MARTIN CO.		
Scale: 1"=300'	Notes	Date	Approved	
Computed	Herrick	10-7-30		
Drawn				
Traced				
Checked				
Reviewed				

The above shows existing alignment as of Mar. 9, 1940.

J. Delaney
 Div. Engr. of R/W

R/W - LATERAL DITCH LT. STA. 1158 + 73
 Required